

Anne Smerdon & Corinne Lewis

Captive Companions

21 February – 5 July 2020



**TWEED REGIONAL
GALLERY**

& MARGARET OLLEY ART CENTRE | MURWILLUMBAH



For decades, the intelligence of birds has been greatly underestimated and they have been thought of as 'easy pets'. However, recent ornithological studies have shed light on just how intelligent birds actually are. Some species of birds even rival humans in certain aspects of intelligence and social skills. These findings challenge the way we as humans have been keeping pet birds in captivity and it provides insight into how we can become more supportive and ethical bird owners.

In an attempt to highlight this, artists and friends Corinne Lewis and Anne Smerdon, brought together over 30 highly trained free-flight birds of different species, to document their personalities and plumage.

For Anne, taking references from live birds that are free to fly and express themselves offers the rare opportunity to closely encounter and document the true personalities of each bird.

For Corinne, the focus rests on the intimate bond between highly trained 'birds' and their 'dedicated humans'. Eschewing traditional portraiture, the females in Corinne's paintings are anonymous.

Sumptuous garments emulate the vivid plumage of the birds they hold. The exotic bird denotes the feminine, the intuitive and the multi-hued resonance that is nature itself.

For any sales enquiries please contact the Gallery Shop.

02 6670 2790 | tweedart@tweed.nsw.gov.au



Anne Smerdon, *Aslan* 2020,
oil on board, 30 x 24 x 0.6cm

\$825



Anne Smerdon, *Aurora & Forest* 2020,
oil on board, 30 x 24 x 0.6cm

SOLD



Anne Smerdon, *Raikou* 2020,
oil on board, 30 x 20 x 1cm

SOLD



Anne Smerdon, *Schiele* 2020,
oil on board, 30 x 21 x 0.6cm

SOLD



Anne Smerdon, *Mowgli* 2020,
oil on board, 30 x 22 x 1cm

SOLD



Anne Smerdon, *Chewwy* 2020,
oil on board, 30 x 24 x 0.6cm

\$825



Anne Smerdon, *Figaro* 2020,
oil on board, 30 x 24 x 0.6cm

\$825



Anne Smerdon, *Kirby* 2020,
oil on board, 30 x 21 x 0.6cm

SOLD



Anne Smerdon, *Harley* 2020,
oil on board, 30 x 21 x 1cm

SOLD



Anne Smerdon, *Griffin* 2020,
oil on board, 30 x 24 x 0.6cm

\$825



Anne Smerdon, *Kyran* 2020,
oil on board, 30 x 24 x 0.6cm

SOLD



Anne Smerdon, *Vonnegut* 2020,
oil on board, 30 x 24 x 0.6cm

SOLD



Anne Smerdon, *Solo* 2020,
oil on board, 30 x 24 x 0.6cm

SOLD



Anne Smerdon, *Ranger & Fish* 2020,
oil on board, 60 x 41 x 1cm

\$1650



Anne Smerdon, *Bumi* 2020
oil on board, 60 x 41 x 1cm

\$1650



Anne Smerdon, *Maui 1* 2020,
oil on board, 24 x 30 x 0.6cm

\$825



Anne Smerdon, *Nemo* 2020,
oil on board, 30 x 24 x 0.6cm

\$825



Anne Smerdon, *Olaf* 2020,
oil on board, 30 x 24 x 0.6cm

SOLD



Anne Smerdon, *Ranger* 2020,
oil on board, 30 x 24 x 0.6cm

SOLD



Anne Smerdon, *Dory* 2020
oil on board, 21 x 30 x 1cm

SOLD



Anne Smerdon, *Kiah* 2020
oil on board, 21 x 30 x 0.6cm

\$825



Anne Smerdon, *Maui 1* 2020
oil on board, 24 x 30 x 0.6cm

\$825



Anne Smerdon, *Pheonix & Meraxes* 2020
oil on board, 30 x 40 x 1cm

SOLD



Anne Smerdon, *Portrait of Corinne (and Phoenix)* 2020,
oil on board, 122 x 60 x 1cm

NFS



Corinne Lewis, *Anne and Vonnegut* 2016
oil on linen, 123 x 100cm

NFS



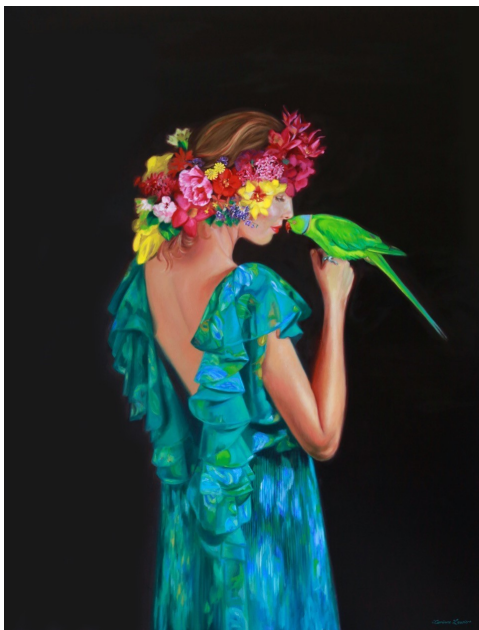
Corinne Lewis, *En Botas Españolas* 2019
oil on linen, 74 x 54cm

SOLD



Corinne Lewis, *Harley and Heels* 2019,
oil on linen, 74 x 54cm

\$3500



Corinne Lewis, *Gentle Souls by Angels Kissed* 2019,
oil on linen, 130 x 100cm

\$7900



Corinne Lewis, *Of Spring Everlasting* 2019,
oil on linen, 100 x 80cm

\$6800



Corinne Lewis, *Pascal, Pascal* 2019,
oil on linen, 200 x 85cm

\$9800



Corinne Lewis, *Heaven and Earth, Where in One Moment Blend* 2020,
oil on linen, 105 x 160cm

\$9800



Corinne Lewis *Mon Vieux Flirt* 2019,
oil on linen, 60 x 90cm

\$4800



Corrine Lewis, *God Guides their Wing, HE Spreads their Table that they Nothing Lack* 2020,
oil on linen, 75 x 100cm

\$5500



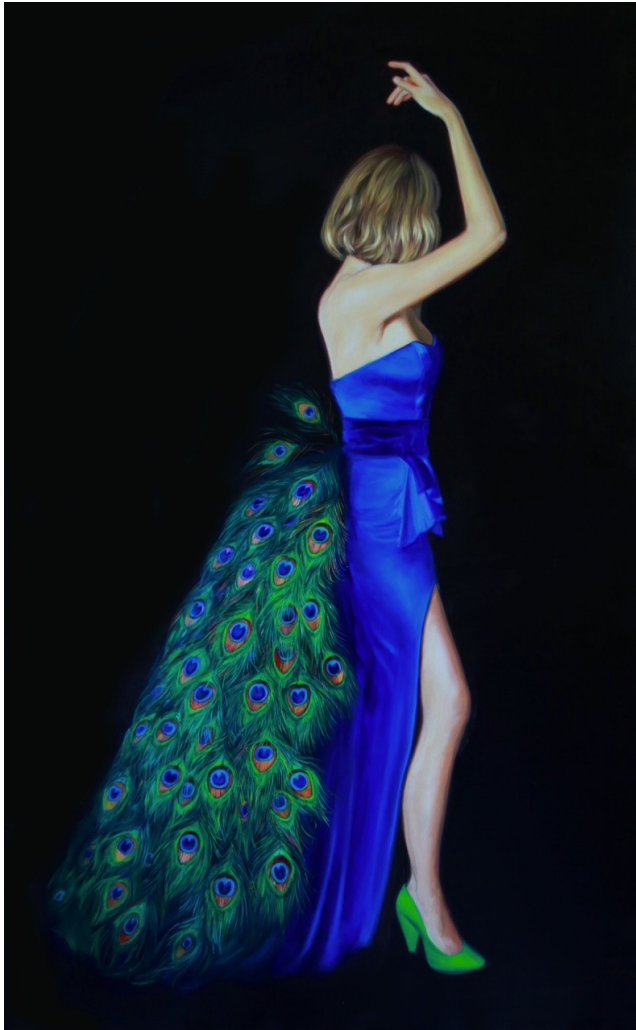
Corinne Lewis, *The Hope of One and the Happiness of Both* 2019,
oil on canvas, 180 x 120cm

\$10500



Corinne Lewis, *Thus to Thy Beauty Does My Fond Heart Look* 2019,
oil on board, 50 x 40cm

\$2500



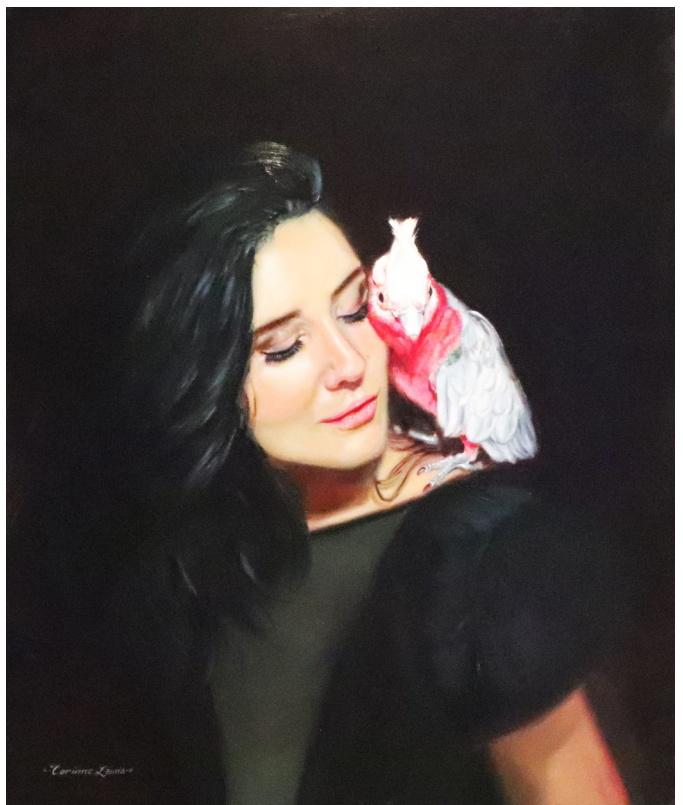
Corinne Lewis, *Resplendent Ornament* 2019,
oil on linen, 200 x 135cm

\$10500



Corinne Lewis, *Free as a Bird to Settle Where I Will* 2019,
oil on linen, 130 x 100cm

\$7900



Corinne Lewis, *Of Cares that Consume Us Both* 2019,
oil on board, 60 x 50cm

\$2900



TWEED REGIONAL GALLERY

& MARGARET OLLEY ART CENTRE | MURWILLUMBAH

2 Mistral Rd Murwillumbah NSW 2484

tweedart@tweed.nsw.gov.au | artgallery.tweed.nsw.gov.au/



Gallery DownTown is the annexe of The Tweed Regional Gallery & Margaret Olley Art Centre, an initiative of Tweed Shire Council and is supported by the NSW Government

